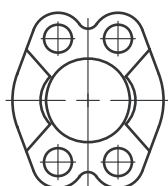


# Фланцевые фитинги

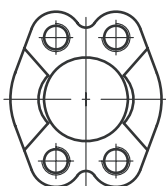
## фланцевые прижимы SAE



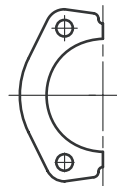
FHS - p. 15



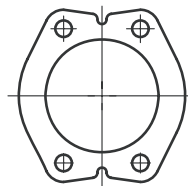
FUS - p. 16



FUSM - p. 17



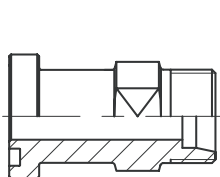
FHSF - p. 18



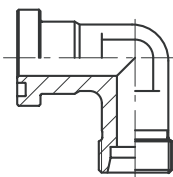
FUSF - p. 19

### фланцевые переходники SAE:

метрическая резьба конус  $24^\circ$

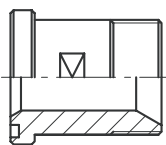


GFS - p. 20

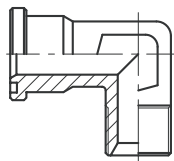


WFS - p. 22

резьба BSPP конус  $60^\circ$

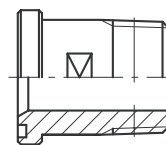


GFS-G - p. 24



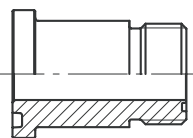
WFS-G - p. 25

наружная резьба NPT

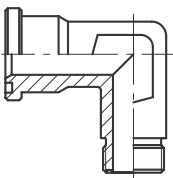


GFS-N - p. 26

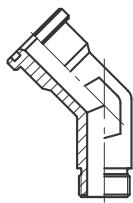
резьба ORFS, O-Lok



L(O)HQ - p. 27

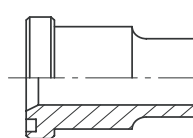


L(O)EMQ - p. 28

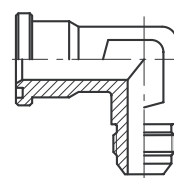


L(O)VQ - p. 29

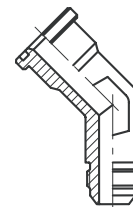
резьба JIC  $37^\circ$ , Triple-Lok®



XHQ - p. 30

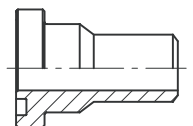


XEMQ - p. 31

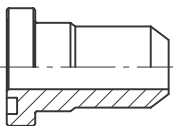


XVQ - p. 32

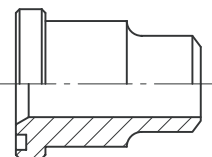
приварные в стык



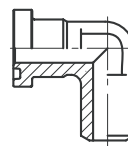
ASR - p. 33



AS - p. 34

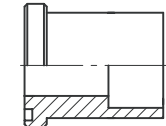


ASL - p. 36

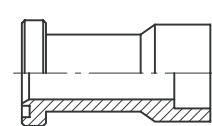


WAS - p. 37

Socket weld end



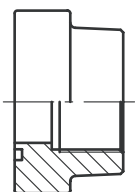
ES - p. 38



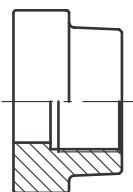
ESL - p. 40

### фланцевые переходники SAE под 4 болта

резьба BSPP конус  $60^\circ$



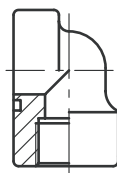
PAFS-G - p. 41



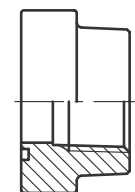
PGFS-G - p. 42



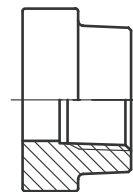
PAFSF-G - p. 43



PAFS-90G - p. 44



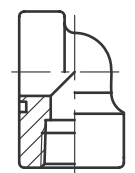
PAFS-N - p. 45



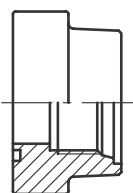
PGFS-N - p. 46

внутренняя резьба NPT

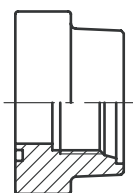
внутренняя метрическая и UN/UNF резьбы



PAFS-90N - p. 47

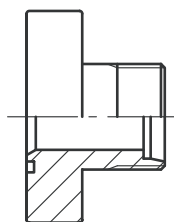


PAFS-M - p. 48

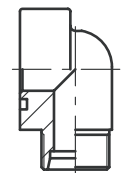


PAFS-U - p. 49

Резьба EO конус  $24^\circ$



PAFG-M - p. 50



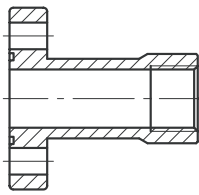
PAFG-90M - p. 51

### фланцы для шестерёнчатых насосов:

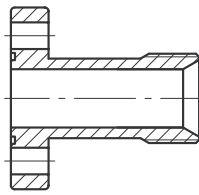
Специальный размер фланцев насоса



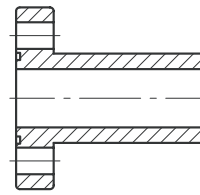
PF – p. 84



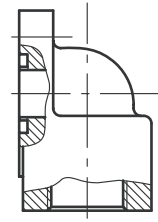
PFL – p. 84



PFE – p. 85

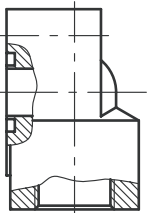


PFB – p. 85

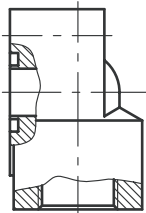


PWDS – p. 86

### Алюминиевые фланцы



PWDS-G – p. 87

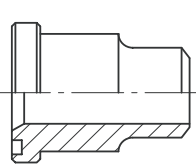


PWDA – p. 88

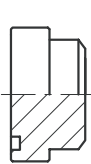
### квадратные фланцы ISO 6164



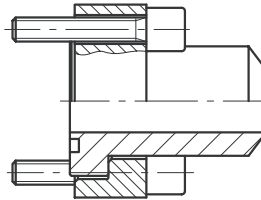
PSFC – p. 89



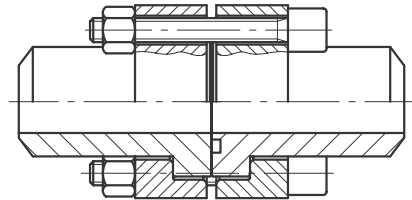
PSFA-B – p. 90



PSFP – p. 91

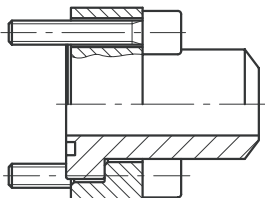


PSF-B – p. 92

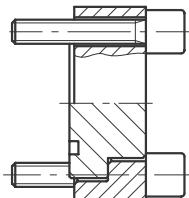


PDSF-B – p. 93

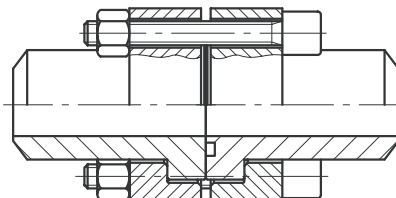
### квадратные фланцы Setop



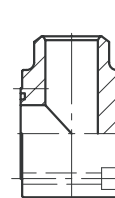
PCF-B – p. 94



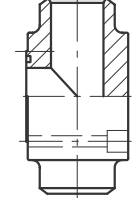
PPCF – p. 95



PDCF-B – p. 96

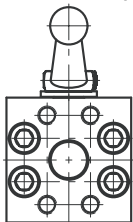


PLCF-B – p. 97

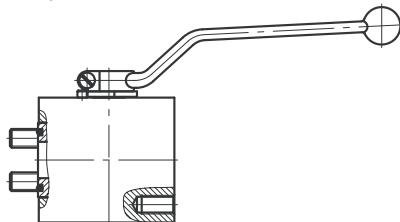


PTCF-B – p. 98

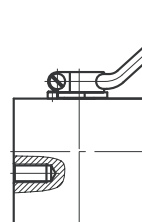
### фланцевые шаровые краны



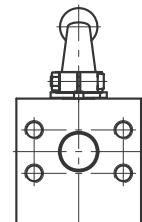
KH-B1V-S – p. 99



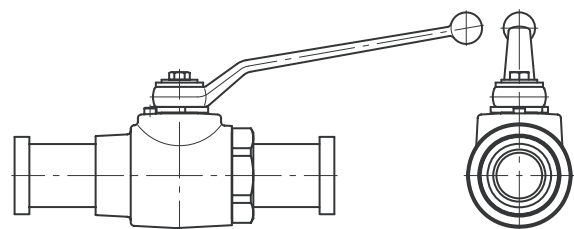
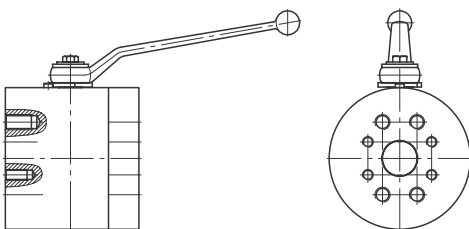
KH-B2V-S – p. 100



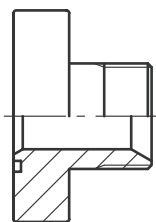
KH-B3V-S – p. 101



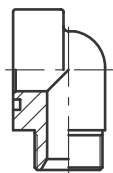
KH-A-S – p. 102



резьба BSPP конус 60°

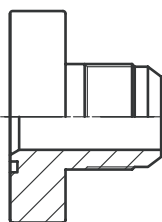


PAFG-G - p. 52

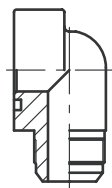


PAFG-90G - p. 53

резьба Triple-Lik конус 37°

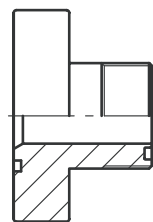


PAFG-X - p. 54

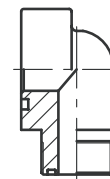


PAFG-90X - p. 55

резьба ORFS, O-Lok

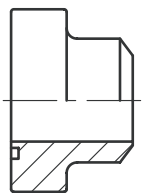


PAFG-L - p. 56

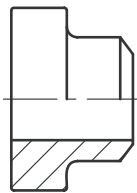


PAFG-90L - p. 57

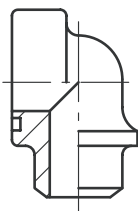
приварные в стык



PAFS-B - p. 58

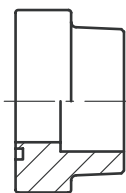


PGFS-B - p. 59

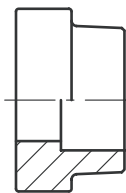


PAFS-90B - p. 60

приварные в гнездо



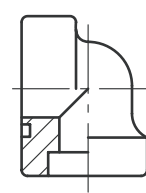
PAFS-S - p. 61



PGFS-S - p. 62

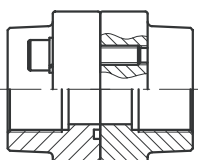


PAFSF-S - p. 63

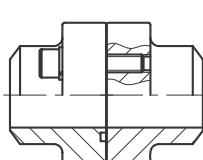


PAFS-90S - p. 64

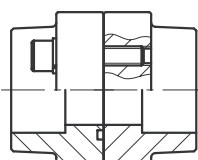
комплект фланцевых соединений



PDFS-G - p. 65

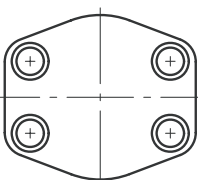


PDFS-B - p. 66

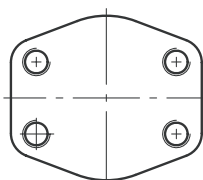


PDFS-S - p. 67

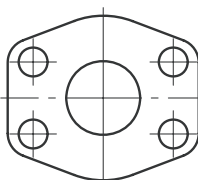
принадлежности для фланцев SAE



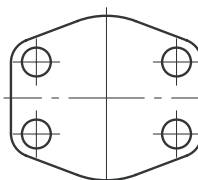
PAFC - p. 68



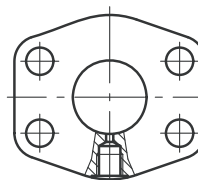
PGFC - p. 69



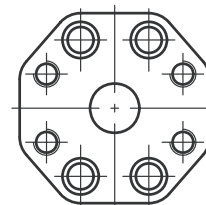
CPM - p. 70



AP - p. 71

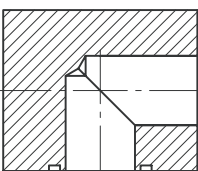


PAGL-(G/M) - p. 72

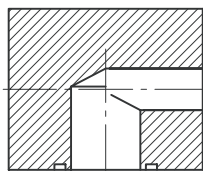


PRF - p. 73

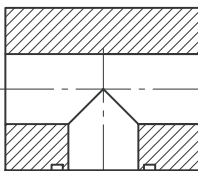
SAE Соединительные блоки



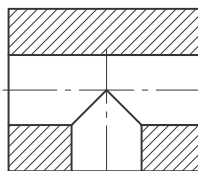
PBL - p. 74



PBLR - p. 75

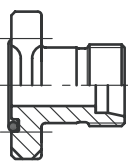


PBT - p. 76

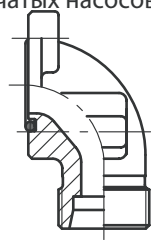


PBTC - p. 77

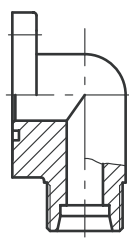
фланцы для шестерёнчатых насосов:  
с метрической резьбой 24°



BFG - p. 78

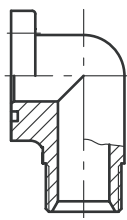


BFW - p. 79

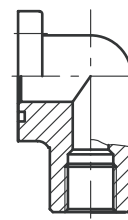


BFW-3 - p. 80

Резьба BSPP тип папа/мама

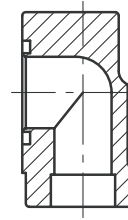


BFW-G - p. 81



BFW-GI - p. 82

приварные в гнездо



BFW-S - p. 83